



**TIKVAH EDUCATION**  
**AUSTRALIA**



**SCHOOL OF**  
**WANDERERS**

Affiliate Company

**TikvahFIDE**

Welcome to  
**Tikvah Education  
Australia**



**Where together,  
we bring hope to  
children and youth**



Samantha Joy Patrick  
Founder, CEO & Teacher



# Vision & Mission

Tikvah Education Australia Foundation Ltd is a service for all students from grades 1-12 in Australian public schools who are significantly behind in literacy and numeracy to help the catch-up.

Foundation services include:

**HoTLaNe Academy** – HoTLaNe’s success is achieved through evidence-based teaching practice delivered by trained teaching professionals in one-on-one learning environments.

**School of Wanderers** – The School of Wanderers success is achieved by providing young people with the opportunity to engage in immersed learning, which is proven to be an effective form of education.

**TikvahSCHOLAR** – TikvahSCHOLAR’s success is achieved through producing ‘targeted grads’ who can effectively implement evidence-based practice for improved student outcomes in literacy & numeracy.



# Our Services



## HoTLaNe Academy

A **free, one-on-one education service** for students in grades 1-12 who are enrolled in an Australian public school and experience significant educational disadvantage.

## School of Wanderers

A **free education service** where students learn literacy & numeracy skills across a range of subject areas through immersed learning in interstate and international locations.

## TikvahSCHOLAR

Tikvah's University scholarship fund is our professional development strategy. We will equip pre-service teachers with evidence-based teaching practices through immersed professional learning strategies, so they can become exceptional teachers.

Students in the HoTLaNe Academy are eligible for sponsorship for School of Wanderers excursions. In the future, the Foundation will build the School of Wanderers and will open its doors with multiple categories of enrollment for disadvantaged students

# Strategic Directions

1

## **Tikvah Education Australia Foundation Limited**

A foundation has been established to receive funding from government, business, community-based organisations, and individuals, to financially support the HoTLaNe Academy, School of Wanderers and TikvahSCHOLAR.

2

## **TikvahCLUB**

Our affiliate company, TikvahFIDE Pty Ltd, is responsible for generating wealth for Tikvah Education Australia Foundation Limited, so it can achieve its charitable purposes. The purpose of TikvahFIDE Pty Ltd is to improve the educational outcomes of children and youth across the globe and raise the standard of living for future generations.

We don't intend that the services of the Foundation become a burden upon the economy, but rather, that our services boost the economy. Therefore, TikvahFIDE's educational products promote national and international tourism amongst young people and their families.

# Strategic Directions

3

## Evidence-Based Practice

Our two primary forms of evidence-based practice are:

- \* **Goal-orientated teaching and learning** – Tikvah aligns its practices with the Australian Governments national goals for literacy and numeracy using the National Literacy and Numeracy Learning Progressions version 3 (ACARA).
- \* **Data-Driven Teaching & Learning** – teachers are trained to accurately and effectively report against the National Literacy and Numeracy Learning Progressions in a timely manner, and to use the data to inform personalised teaching and learning programs.

4

## Immersed Learning

We are founded upon the belief that immersion is the most effective form of education.

This is achieved in the following ways:

- \* **Tikvah's professional development strategy** – pre-service and qualified teachers learn Tikvah's teaching methodology through on-the-job collegial practice.
- \* **HoTLaNe Academy** – teachers select immersed learning strategies when instructing students in literacy & numeracy, ensuring they are active participants rather than passive observers.
- \* **School of Wanderers** – students travel interstate (Australia) and internationally to learn about a range of subject areas in global communities first-hand.
- \* **TikvahCLUB** – educational programs provide opportunities for students to participate in local and distant businesses, exposing them to a range of industries first-hand.

# HoTLaNe Academy

Hope Through Literacy & Numeracy

Tikvah Education Australia Foundation Ltd provide educational support to children and youth who are at significant risk of not achieving their educational targets in literacy and numeracy before the conclusion of their primary education and who continue to demonstrate elementary skills in high school.

The Foundation provides all services **FREE of charge**. It is funded through community and corporate donations, as well as through TikvahFIDE's investment initiatives.



**TIKVAH EDUCATION  
AUSTRALIA**



**SCHOOL OF  
WANDERERS**

Affiliate Company

**TikvahFIDE**



# Behaviour in Australian Public Schools

What are we seeing?



Physical Violence

School Refusal

Social Isolation

Bullying

Despondence

Anxiety

Disengagement

Verbal Abuse

Theft

# Behaviour in Australian Public Schools

## What is it leading to?

Poor Academic Achievement

Disengagement

School Refusal

High Absenteeism

Reclusiveness

Removal from the Classroom

Suspension

Expulsion



# Behaviour in Australian Public Schools

## What is Tikvah doing about it?

We provide one-on-one, personalised tuition.



Play-based Instruction

Excursion-based Instruction



Web-conferencing

Face-to-Face



We work collaboratively with families and allied health professionals to improve the emotional well-being of students in the home.

We work collaboratively with schools to address the emotional well-being of students in the school environment.



# Behaviour in Australian Public Schools

## What makes Tikvah effective?

We align our processes with the Department of Education's literacy and numeracy priorities.

We are qualified teachers who:

Collaborate with families, allied health professionals and schools.

Effectively implement evidence-based teaching practices.

Understand school and Department procedures and can implement practices that are consistent with these systems.

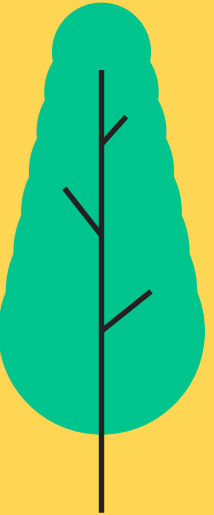
Provide substantial support in the form of one-on-one, personalised instruction.

Plan, implement and report on student learning against the National Literacy & Numeracy Learning Progressions (ACARA).

Provide support for families to improve the emotional well-being of students both in the home and at school.

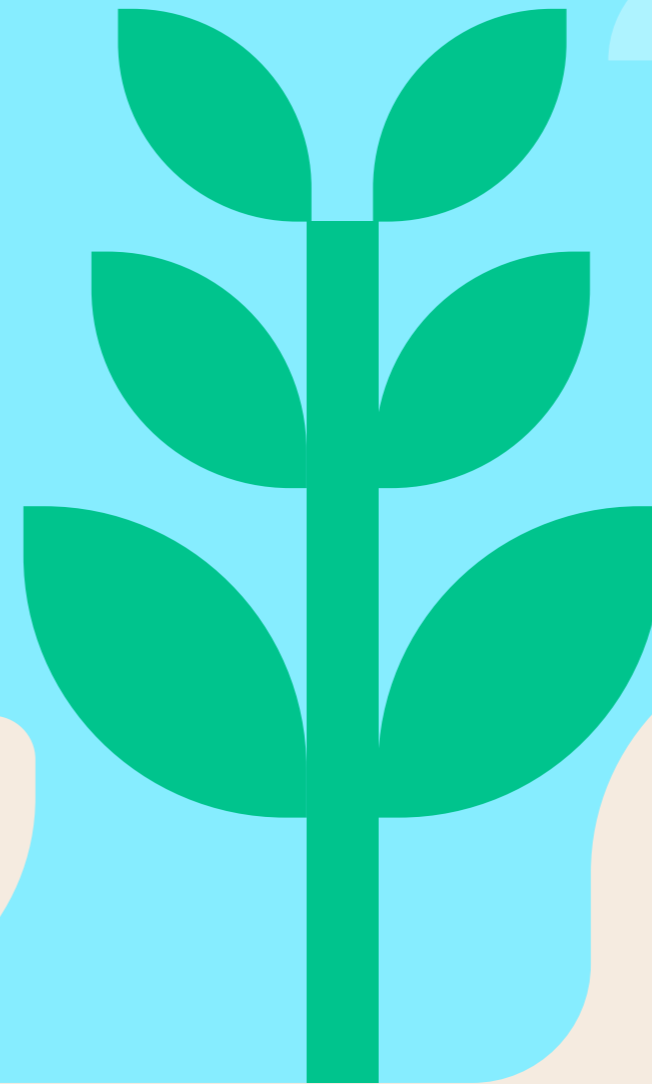
Engage in ongoing professional development.

Use assessment data to inform teaching and learning.



# Helping Students Succeed

**Tikvah Education Australia advocates for students educational success.** If students in **grades 1 to 12** have been identified to be **significantly behind**, the HoTLaNe Academy intervenes by providing a substantial amount of support. The amount of instruction a student is eligible to receive is **dependent upon their attendance at school.**



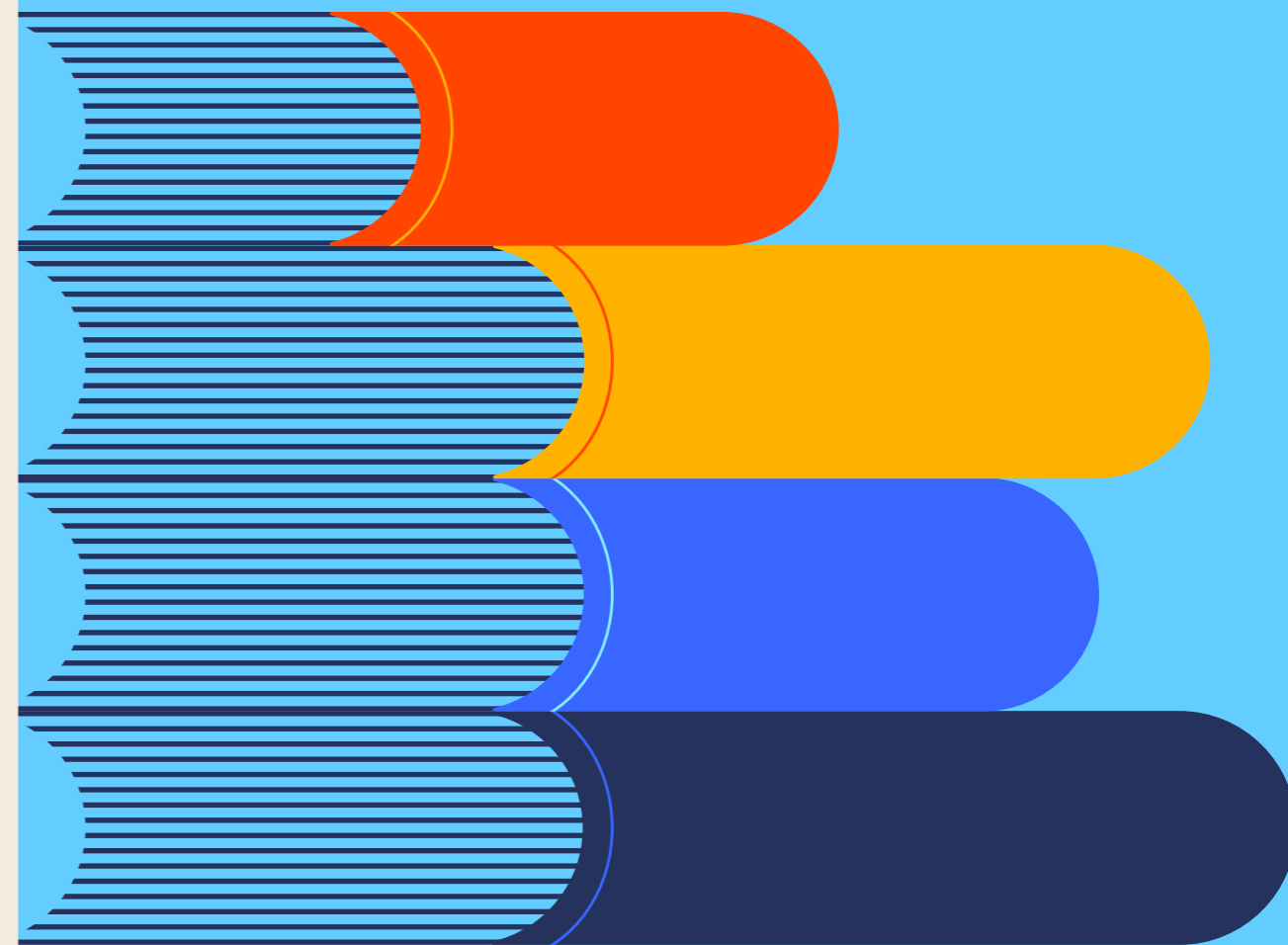
# Helping Students Succeed

## **Full-Time Attendance - Category 1**

If students are attending school full time, they are eligible for up to



4 hrs of HoTLaNe lessons per week under category 1.



# Helping Students Succeed

## **Partial Attendance – Categories 2 & 3**

**Tikvah Education Australia is working collaboratively with schools to keep students in school.** If students behaviour is significantly impacting on their ability to engage safely in the classroom and all supports provided by the school have been exhausted, such as placing students on partial attendance, the next step is to enrol these students into Distance Education.

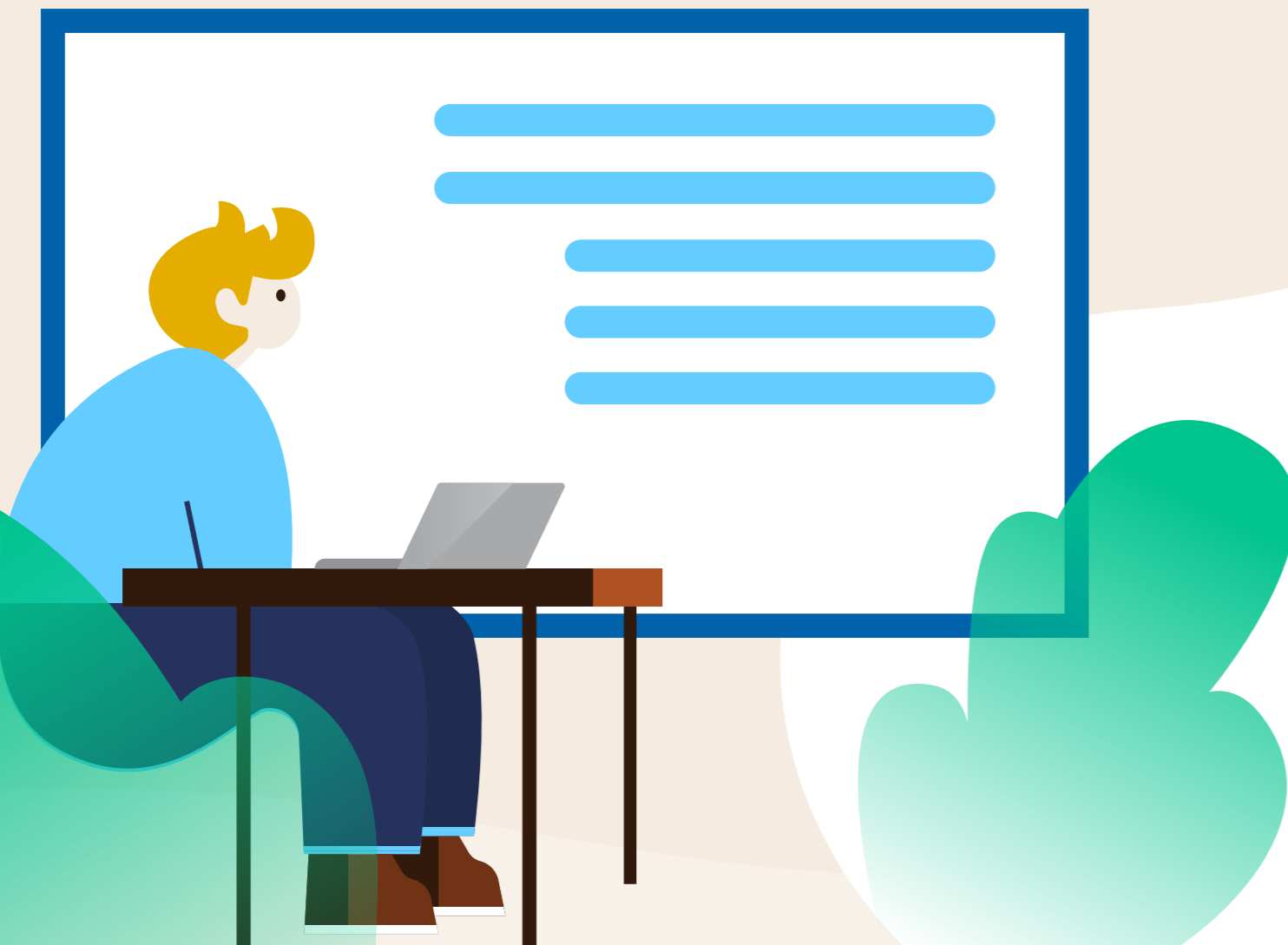
**Tikvah Education Australia identifies the need where parents are unable to supervise the Distance Education program, or it is unsuitable for the student to learn from home.**



# Helping Students Succeed

## **Partial Attendance – Categories 2 & 3**

Tikvah Education Australia is filling this gap. Removing a student from the school community is a decision that is not taken lightly, as it can have a direct impact on the emotional well-being of the student and the well-being of the family. The HoTLaNe Academy acts as an additional support structure for schools to support these students with engaging positively in the school environment, so they can remain at school.



**Support structures are dependent upon the students' needs and range from partial day support to full day support, in which all supports promote the development of literacy and numeracy skills and pro-social behaviour.**



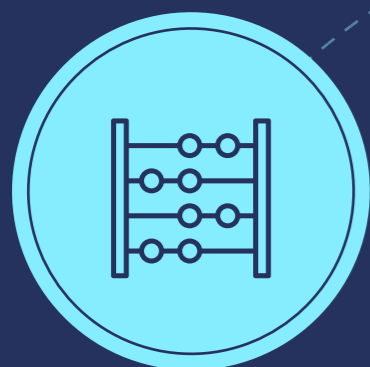
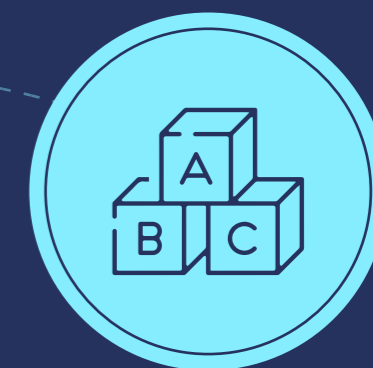
# Helping Students Succeed

## Distance Education – Category 4

Tikvah Education Australia is attempting to stand as an additional support for schools to help prevent the following from happening:

**“The local school cannot meet the student's educational needs with access to the available school, community, and state resources.”**

NSW Government. Distance Education Enrolment Procedures. (2022)



For students in category 4, they are seen to jump from school to school but never experience success.

Suspension and expulsion become a normal part of life.

Distance education is one avenue, but if learning from home is not possible, families seek support in other ways.

There are many great services, such as specialised schools, but these are not always geographically accessible.

# Helping Students Succeed

## **Distance Education – Category 4**



Tikvah Education Australia is working collaboratively with schools to make Distance Education successful for those students who do not have any other option and to support them in transitioning back to school.

**The HoTLaNe Academy will provide a 'supervisor' in the form of a qualified teacher.** This includes providing a teacher who can take students outside the home if learning from home is not possible.

# Helping Students Succeed

## **Distance Education – Category 4**

This level of support poses a **significant financial burden** upon the community, but it is necessary for those students who have no other option. If Distance Education is unsuccessful for these students and there is no other suitable local setting for them, then homeschool is the next step.

**Tikvah Education Australia will step in for these cases to provide a teacher who will plan, implement, and report on student learning for their homeschool program.** This is a substantial level of support, but what is the alternative? Homeschooling in these cases places additional burden upon the family and the community. It also significantly reduces the chance that these young people will ever have their educational needs met.

**Tikvah Education Australia will work at all levels, from the school to Distance Education and into the homeschool environment, to intervene and do what it can to get the student back to school.**

# Helping Students Succeed

## Distance Education – Category 4

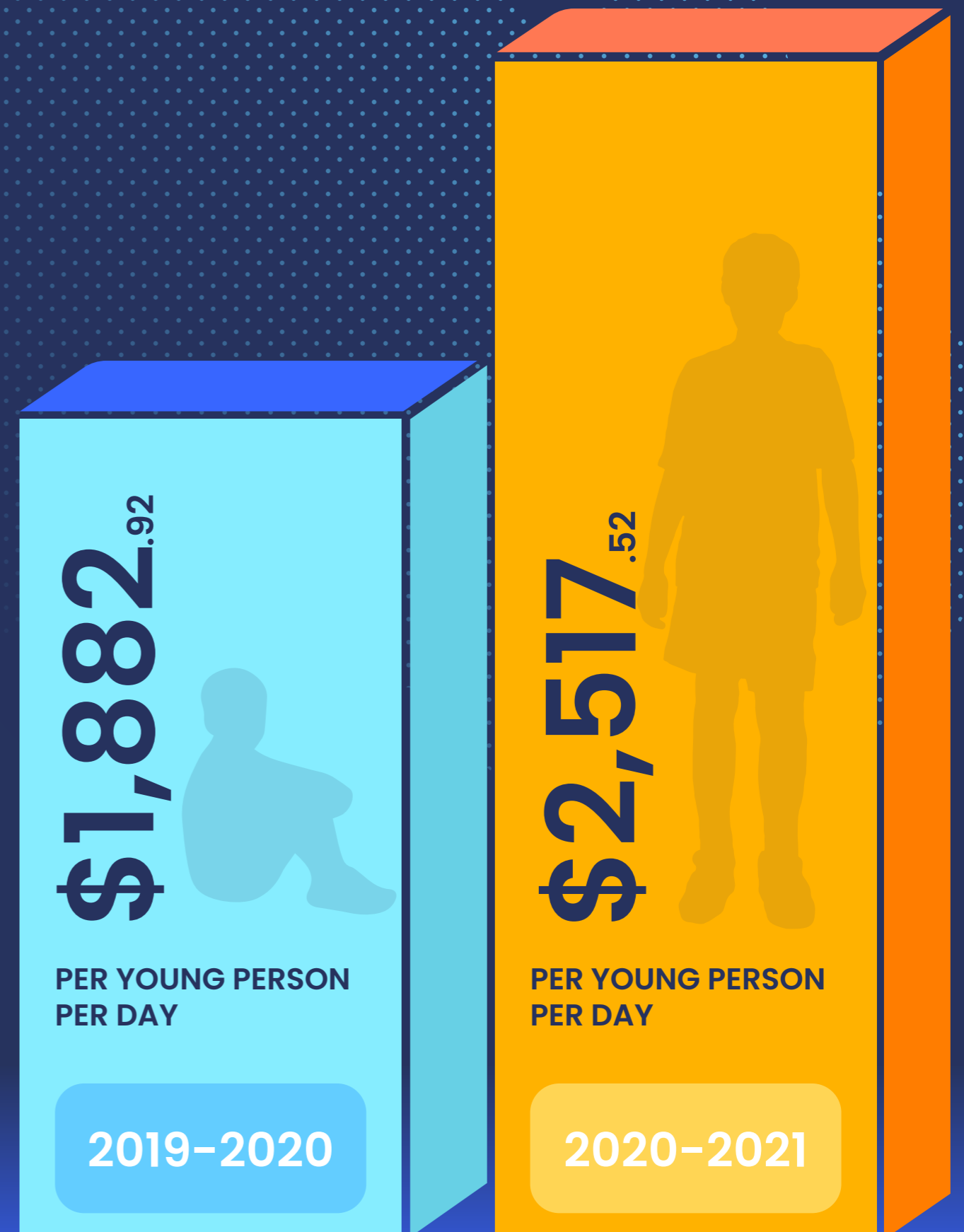
Students who are not engaging in school due to behaviour, and who have no support structure that is working effectively for them, have an increased risk of being in trouble with the law.

The Australian Government Productivity Commission reported that in 2019–2020, the cost per average day per young person in detention-based supervision in Australia was \$1,882.92. Data shows the cost increased to \$2,517.52 between 2020–2021, per young person per day. That's \$918,894.80 per year!

Australian Government Productivity Commission. Report on Government Services 2022. 17 Youth Justice Services Data Tables. <https://www.pc.gov.au/ongoing/report-on-government-services/2022/community-services/youth-justice>.



This costs tax payers hundreds of thousands of dollars per year!



# Helping Students Succeed **Tikvah Education Australia is taking action.**

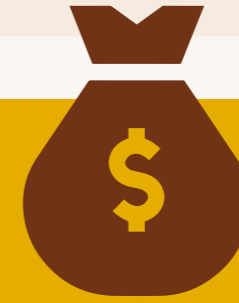
Connections between poor academic achievement and youth detention-based supervision:



**Disadvantaged communities** face challenges such as overcrowded classrooms, insufficient resources, and high teacher turnover. As a result, students may struggle to receive a high-quality education leading to poor academic performance and disengagement from school.



**Adverse childhood experiences**, such as neglect, abuse or exposure to violence have a profound impact on students cognitive and emotional development, leading to difficulties in concentration, self-regulation, and developing healthy relationships. This impedes on academic progress and contributes to behavioural issues that increase the likelihood of involvement in the criminal justice system.



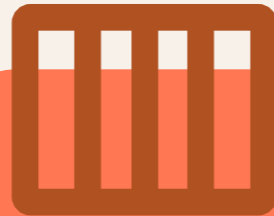
**Youth from low-income families** may face financial instability, lack of access to educational resources, and limited opportunities for academic support or enrichment activities. The cycle perpetuates due to a lack of motivation toward academic success, as basic needs become a priority rather than excelling at school.

# Helping Students Succeed **Tikvah Education Australia is taking action.**

Connections between poor academic achievement and youth detention-based supervision:



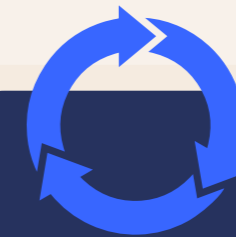
Many youth in detention facilities have **undiagnosed or untreated mental health conditions**, such as depression, anxiety, or ADHD, which can hinder their ability to engage in learning and succeed academically. Without appropriate support, these challenges can escalate and manifest in delinquent behaviours, leading to involvement in the justice system.



**The school-to-prison pipeline** describes the system that funnels disadvantaged youth from schools into the justice system. School disciplinary practices, such as zero-tolerance policies and over-reliance on punitive measures, disproportionately affects students of colour and those from low-income backgrounds. As a result, these students are more likely to be suspended, expelled, or referred to law enforcement, setting them on the trajectory toward detention-based supervision.



**Youth who abuse drugs or alcohol** may experience impaired cognitive functioning and struggle to maintain consistent attendance and academic performance. Peer influences can contribute to engagement in risky behaviours, truancy, and ultimately, involvement in criminal activities that lead to detention-based supervision.



Upon release from detention, **many youth struggle to reintegrate** into their communities and schools due to a lack of supportive resources. They may face stigma, academic gaps, and social alienation, making it challenging to re-engage in education and avoid further involvement in the justice system.

# Helping Students Succeed

## How does the cost compare?

We must improve access to high-quality education, particularly in marginalised communities, to address poor academic achievement.

Detention-based supervision

**\$918,894<sup>.80</sup>**



PER YOUNG PERSON  
PER YEAR

HoTLaNe Academy's highest level of support, providing **22 hours a week of one-on-one instruction for literacy and numeracy**

**\$153,600<sup>.00</sup>**



PER YOUNG PERSON  
PER YEAR

HoTLaNe Academy's most common category of support, providing **4 hours a week**

**\$33,600<sup>.00</sup>**



PER YOUNG PERSON  
PER YEAR

# Helping Students Succeed

## How does the cost compare?

Parents can't afford to provide the support, even for many higher socio-economic families.

We are **educating**  
Australia's young people.

We are taking action to  
see **real change.**

The HoTLaNe Academy  
provides up to **22 hours a**  
**week for FREE.**

On average, tuition provided by a qualified teacher in after school tutoring programs can cost families in excess of \$75 a week for just one hour. That won't help these kids catch up!



# Striving to be Self-Sustainable

## Tikvah's Investment Initiative – TikvahCLUB



Tikvah Education Australia is working toward becoming **self-sustainable** so that it places **no financial burden** upon the community, but instead, it **boosts the economy** through tourism.

# Striving to be Self-Sustainable

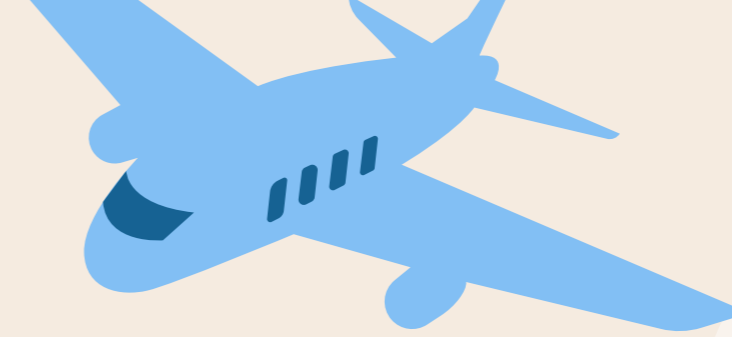
## Investment Initiatives – Australian Tourism & Global Communications

TikvahFIDE's teachers and support staff are working collaboratively with businesses and organisations around Australia and internationally to create educational programs that promote youth participation in their services. These programs can be purchased by local, national, and international audiences at [www.tikvahfide.com.au](http://www.tikvahfide.com.au) through TikvahCLUB.

Revenue generated from TikvahCLUB will fund the work of Tikvah Education Australia Foundation Ltd to make it sustainable for **long-term impact**.



# Sending Students Global



## School of Wanderers

TikvahFIDE's Teacher & Author, Jotham Kingston, is writing a book series titled, 'School of Wanderers'. Jotham's work of fiction has been inspired by Samantha Joy Patrick's vision, that we will:

\* Inspire young people to participate in local, national and global communities.

\* Educate young people about a variety of industries and subjects within those industries.

Samantha Patrick believes that opportunities experienced early in life can have a direct impact on a person's life decisions and career choices in the future.

Samantha is establishing a 'real-life' School of Wanderers that will take education beyond the four walls of the classroom across state and international borders to inspire young people to learn through immersion and to see the world from a different perspective. This philosophy of education could change the course of children's lives.



# School of Wanderers

Kokoda Track November 2023



# Become a Sponsor

Tikvah Education Australia relies upon funding from government, business and community-based organisations and individuals, as well as its own investment initiatives, to make its programs possible.

## Sponsor an Interstate or International Excursion

**The School of Wanderers provides the opportunity for students to travel across Australia and overseas.** This includes HoTLaNe Academy students. On our first international excursion, where we walked the Kokoda Track with 7 students in November 2023, we began creating an educational program about Kokoda and the ANZACs at the same time.

Your sponsorship of our excursions not only makes the excursions possible for students, but also contributes to the development of our educational programs that are sold to schools, teachers and individuals, which will generate long-term income for the Foundation.

## Sponsor the Development of a Program

**The Tikvah team travels across Australia and internationally to design authentic learning opportunities that will inspire young people to explore the world themselves.** The educational programs we create will be sold to schools, teachers and individuals that will generate long-term income for the Foundation. Your sponsorship will help us fund the development of these projects.

To discuss sponsorship, please contact:

**Korinne Vitnell**

Global Community Engagement  
Officer & Executive Assistant to CEO

**(+61) 488 179 386**



# Become a Sponsor



## Action Sponsorship \$35,000

Help an Australian public school student who is significantly behind catch-up to their peers.

- \* 1 advertisement in 2 educational programs
- \* Student engagement in the advertisements through literacy and numeracy instruction
- \* Logo on 1 School of Wanderers excursion uniform
- \* Advertising shoutouts on social media during 1 School of Wanderers excursions
- \* Logo on website

## Achieve Sponsorship \$50,000

Make a difference in the life of a student who is only partially attending school so they can receive essential behavioural and educational support.

- \* 1 advertisement in 3 educational programs
- \* Student engagement in the advertisements through literacy and numeracy instruction
- \* Logo on 1 School of Wanderers excursion uniform
- \* Advertising shoutouts on social media during 1 School of Wanderers excursions
- \* Logo on website

# Become a Sponsor

## Actualise Sponsorship \$85,000

Have a lasting impact on a student by helping them experience the joy of learning and get back on track.

- \* **1 advertisement in 5 educational programs**
- \* Student engagement in the advertisements through literacy and numeracy instruction
- \* Logo on **1** School of Wanderers excursion uniform
- \* Advertising shoutouts on social media during **1** School of Wanderers excursions
- \* Logo on website

## Accomplish Sponsorship \$140,000

Change the trajectory of a student's life whose struggles impact their participation in classroom learning.

- \* **1 advertisement in 8 educational programs**
- \* Student engagement in the advertisements through literacy and numeracy instruction
- \* Logo on **2** School of Wanderers excursion uniform
- \* Advertising shoutouts on social media during **2** School of Wanderers excursions
- \* Pre- and post- excursion advertising shoutouts
- \* Logo on website

# Statement of Faith



Tikvah Education Australia is founded upon the belief that the God of Israel sees the need of educationally disadvantaged children and youth across Australia and is taking action to address the need.

The vision for Tikvah Education Australia was placed upon Founder CEO, Samantha Joy Patrick, who faithfully said yes to the call.

**Tikvah Education Australia will raise literacy and numeracy standards across Australian public schools. Instruction is consistent with the National Literacy and Numeracy Learning Progressions (ACARA), which outlines the national standards for primary and high school students.**

**TikvahFIDE Pty Ltd produces high quality literature and educational programs that promote literacy and numeracy. These are sold across Australia and internationally. We also produce bible-based content.**

Tikvah Education Australia is committed to bringing hope to children and youth by providing free, personalised, one-on-one instruction, and broadening their knowledge of the world through travel. Tikvah Education Australia reaches all students who experience educational disadvantage, regardless of their beliefs.







**TIKVAH EDUCATION  
AUSTRALIA**



**SCHOOL OF  
WANDERERS**

Affiliate Company

**TikvahFIDE**

[tikvaheducationaustralia.com.au](http://tikvaheducationaustralia.com.au)  
[tikvahfide.com.au](http://tikvahfide.com.au)

CRAFTED BY

**thrive**  
DIGITAL